



CONCRETE GRINDING & POLISHING TOOLS



DIAMAG® GRIND & POLISH SYSTEMS

GRINDING AND POLISHING SYSTEMS



BMG-435



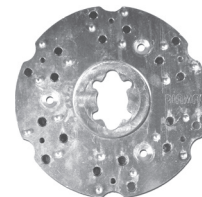
BMG-535 / BMG-580



BMG-735 / BMG-780



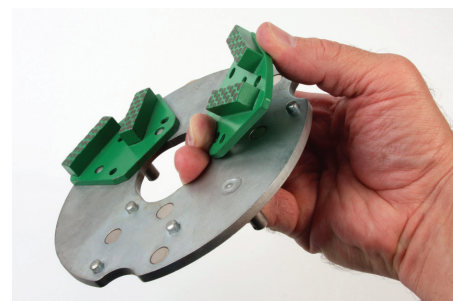
PDG8000/HTC800



Lavina®

Quick Release DIAMAG® Plates

E07155	DIAMAG® Adapter Plate BMG-435
E07185	DIAMAG® Adapter Plate BMG-535 / BMG-580
E07240-2	DIAMAG® Adapter Plate BMG-735 / BMG-780
E07305	DIAMAG® Adapter Plate BMG-720
E07270-3	DIAMAG® Universal Adapter Plate Sase® PDG8000 / HTC 800 Series
E07230	DIAMAG® Adapter Plate HTC® 500 / HTC 650
E07225	DIAMAG® Adapter Plate Lavina®
E07260	DIAMAG® Adapter Plate Innovatec®
E09126	DIAMAG® Resin Adapter Plate / Square
E10366	DIAMAG® Resin Adapter Plate / Round
E06447	DIAMAG® Resin Adapter Plate / 2"
DIA-SUPERMAG-2	DIAMATIC Supermag Plate



On machine or off, thumb or finger pressure easily leverages diamonds from the DIAMAG® plates.

DIAMAG® plates are designed to fit all popular floor polishing and grinding machines. Once attached, DIAMAG® plates eliminate the need for any tools to change or replace diamond tooling. Simple hand and finger leverage can remove the segments. This user friendly and time-saving system helps save unnecessary wear and tear on the diamonds from possible tool damage. Critical alignment pins and industrial magnets insure the proper connection of DIAMAG® diamonds to the plates.

Manufacturers

- Lavina®
- Husqvarna®
- Sase®
- HTC®
- Innovatec®



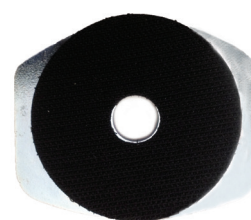
Supermag Plate



Square resin adapter



Round resin adapter



2 inch resin adapter

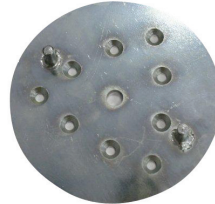
SCREW ON & RIGID PLATE SETUP

GRINDING AND POLISHING SYSTEMS

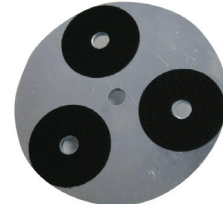
For heavy grinding of concrete with BMG435 machines

BG300212 Diamond Wing Adapter Plate (Screw on)

BG300213 Resin Diamond Adapter Plate (Screw on)



BG300212



BG300213

For heavy grinding of concrete with 535 & 580 machines

PA-10950 Diamond Wing Adapter Plate (Screw on)

BG200994 Resin Diamond Adapter Plate (Screw on)



PA-10950



BG200994

For heavy grinding of concrete with 735 & 780 machines

BG200993-1 Diamond Wing Adapter Plate (Screw on)

PA-10936 Resin Diamond Adapter Plate (Screw on)



BG200993-1



PA-10936

Rigid Head Assembly

For heavy grinding concrete with 735 & 780 machines

BG11880 Fork

BE0204/ BE0584 Bolt & Spring Washer

BG11879 Buffer Disc

BG240190-1 240MM Diamond Holder

BE0608 Retaining Ring

BE0030 Bolt

BE0314 Washer



- For use on first metal bond cuts. The rigid head assembly is designed to cut evenly to produce a floor with an extremely flat profile.
- Limits vibration when cutting thick materials off of flooring and decks.

HARDNESS CHART

GRINDING AND POLISHING SYSTEMS

Choosing the Correct Diamond Bond

It is crucial to the success of your grinding and polishing jobs to select the diamond bond which correctly matches the concrete density of the slab you are working on. While 80% of concrete can be ground or polished with medium bond diamonds, there will be many instances where you will need a different strength bond in order to be effective.

Hard concrete means soft bond tooling is required. If a medium bond diamond is not cutting fast enough or is glazing over, you need to move to a softer bond diamond.

Soft concrete means hard bond tooling is required. If you have a diamond that is wearing too quickly, you will need to select a harder bond in order to increase life span and production.

In our catalogue, you will find options for any slab or stone work that may require special tooling. Whether it be extra soft, soft, medium, hard or extra hard, wet or dry, there is an appropriate choice in the offering for you.

At Diamatic® we thank you for your consideration and patronage. We are 100% confident you will find our diamond tooling to be cutting edge, competitive and productive.

Go to ultraflor.com to see a step-by-step process to produce a polished floor. While you are there, you can download one of our specifications specially created to meet your customers needs or call (866) 295-5512 and get trained today!

< 5500 PSI CONCRETE	4000-5500 PSI CONCRETE	3000-4000 PSI CONCRETE	2500-3000 PSI CONCRETE	< 2500 PSI CONCRETE
EXTRA SOFT BOND DIAMOND	SOFT BOND DIAMOND	MEDIUM BOND DIAMOND	HARD BOND DIAMOND	EXTRA HARD BOND DIAMOND
				
Black Extra Soft Bond Extra Soft Bond Diamonds for floors that have been power troweled or burned. For use on hard concrete at 6000 PSI or above.	Red Soft Bond Soft Bond Diamonds for floors that have been power troweled or burned. For use on hard concrete above 4500 PSI.	Green Medium Bond Medium Bond Diamonds for average strength concrete floors with strengths between 3000 to 4000 PSI.	Blue Hard Bond Hard Bond Diamonds for soft floors that are less than 3000 PSI or for coating and epoxy removal.	Orange Extra Hard Bond Extra Hard Bond Diamonds for soft floors that are 2500 PSI or below. Can also be used for coating and epoxy removal.

SINGLE SEGMENT DIAMOND WINGS

GRINDING AND POLISHING SYSTEMS

Single Segment Wings

For use on light machines

DIA707320XS	18/20 Grit Single Segment Extra Soft (Black)
DIA707320S	18/20 Grit Single Segment Soft (Red)
DIA707320	18/20 Grit Single Segment Medium (Green)
DIA707320H	18/20 Grit Single Segment Hard (Blue)
DIA707340XS	30/40 Grit Single Segment Extra Soft (Black)
DIA707340S	30/40 Grit Single Segment Soft (Red)
DIA707340	30/40 Grit Single Segment Medium (Green)
DIA707340H	30/40 Grit Single Segment Hard (Blue)
DIA707380XS	60/80 Grit Single Segment Extra Soft (Black)
DIA707380S	60/80 Grit Single Segment Soft (Red)
DIA707380	60/80 Grit Single Segment Medium (Green)
DIA707380H	60/80 Grit Single Segment Hard (Blue)
DIA7073140XS	120/140 Grit Single Segment Extra Soft (Black)
DIA7073140S	120/140 Grit Single Segment Soft (Red)
DIA7073140	120/140 Grit Single Segment Medium (Green)
DIA7073140H	120/140 Grit Single Segment Hard (Blue)

- For use under light machines.
- For coating removal and concrete preparation during the polishing process.



Extra Soft



Soft



Medium



Hard

BUFFALO DIAMOND WINGS

GRINDING AND POLISHING SYSTEMS

Extra large - extra long use

BFL708320XS	18/20 Grit Extra Large Double 15MM Seg Diamond Wing Extra Soft (Black)
BFL708320S	18/20 Grit Extra Large Double 15MM Seg Diamond Wing Soft (Red)
BFL708320	18/20 Grit Extra Large Double 15MM Seg Diamond Wing Medium (Green)
BFL708320H	18/20 Grit Extra Large Double 15MM Seg Diamond Wing Hard (Blue)
BFL708320XH	18/20 Grit Extra Large Double 15MM Seg Diamond Wing Extra Hard (Orange)
BFL708340XS	30/40 Grit Extra Large Double 15MM Seg Diamond Wing Extra Soft (Black)
BFL708340S	30/40 Grit Extra Large Double 15MM Seg Diamond Wing Soft (Red)
BFL708340	30/40 Grit Extra Large Double 15MM Seg Diamond Wing Medium (Green)
BFL708340H	30/40 Grit Extra Large Double 15MM Seg Diamond Wing Hard (Blue)
BFL708340XH	30/40 Grit Extra Large Double 15MM Seg Diamond Wing Extra Hard (Orange)
BFL708380XS	60/80 Grit Extra Large Double 15MM Seg Diamond Wing Extra Soft (Black)
BFL708380S	60/80 Grit Extra Large Double 15MM Seg Diamond Wing Soft (Red)
BFL708380	60/80 Grit Extra Large Double 15MM Seg Diamond Wing Medium (Green)
BFL708380H	60/80 Grit Extra Large Double 15MM Seg Diamond Wing Hard (Blue)
BFL708380XH	60/80 Grit Extra Large Double 15MM Seg Diamond Wing Extra Hard (Orange)
BFL7083140XS	120/140 Grit Extra Large Double 15MM Seg Diamond Wing Extra Soft (Black)
BFL7083140S	120/140 Grit Extra Large Double 15MM Seg Diamond Wing Soft (Red)
BFL7083140	120/140 Grit Extra Large Double 15MM Seg Diamond Wing Medium (Green)
BFL7083140H	120/140 Grit Extra Large Double 15MM Seg Diamond Wing Hard (Blue)
BFL7083140XH	120/140 Grit Extra Large Double 15MM Seg Diamond Wing Extra Hard (Orange)

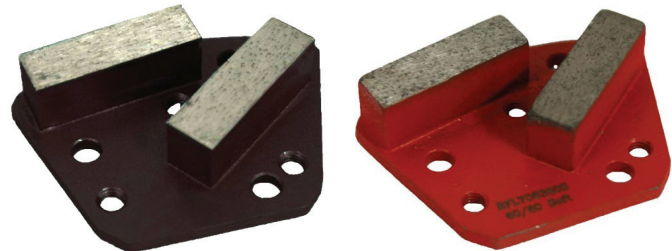
- Long-life diamond wing for coating removal and concrete preparation during the polishing process.



Buffalo Wings

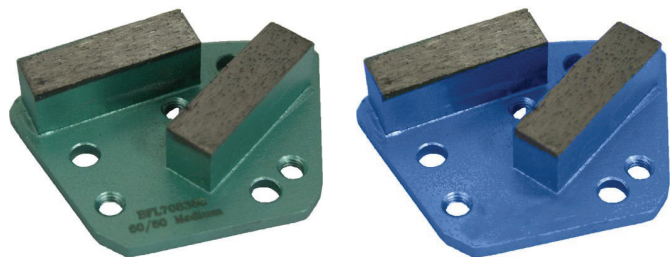
Standard Metal Double Segments

Buffalo's are 50% larger segments



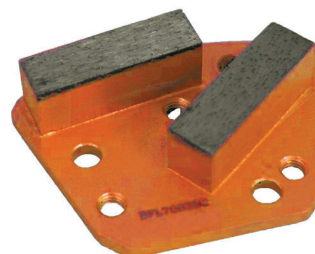
Extra Soft

Soft



Medium

Hard



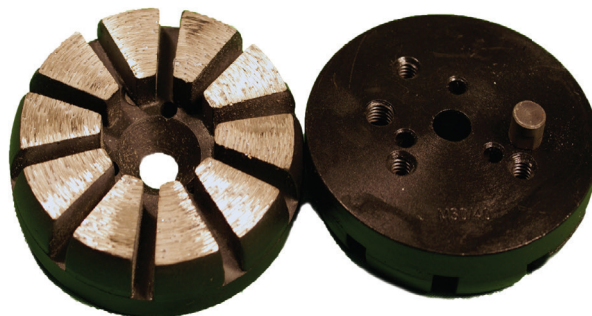
Extra Hard

10 Segment Diamonds

HEAVY GRINDING AND SURFACE PREPARATION

10 Segment Diamonds

DIA-18/20PLUG	10 Segment Plug 18/20 Grit
DIA-18/20PLUG-S	Soft Bond 10 Segment Plug 18/20 Grit
DIA-18/20PLUG-H	Hard Bond 10 Segment Plug 18/20 Grit
DIA-30/40PLUG	10 Segment Plug 30/40 Grit
DIA-30/40PLUG-S	Soft Bond 10 Segment Plug 30/40 Grit
DIA-30/40PLUG-H	Hard Bond 10 Segment Plug 30/40 Grit
DIA-60/80PLUG	10 Segment Plug 60/80 Grit
DIA-60/80PLUG-S	Soft Bond 10 Segment Plug 60/80 Grit
DIA-60/80PLUG-H	Hard Bond 10 Segment Plug 60/80 Grit
DIA-120/140PLUG	10 Segment Plug 120/140 Grit



10 Segment 30/40 3" Plug

- For use on heavy platform machines.
- For heavy grinding.
- Coatings removal/demolition.
- Surface Preparation

PCD - Poly Crystalline Diamonds

SURFACE PREPARATION AND COATING REMOVAL

PCD Diamonds

BG200995L	Full Round PCD Wing Left
BG200995	Full Round PCD Wing Right
BG200997-2	18/20 Grit Split Segment Diamond Wing PCD
BG200999-2	Quarter Round PCD Diamond Wing Right

- For use on all platform machines.
- Coatings removal/demolition.
- Floor preparation.
- Bolt on.
- High production.
- Aggressive.



BG200995L



BG200995



BG200997-2



BG200999-2

TRANSITIONALS



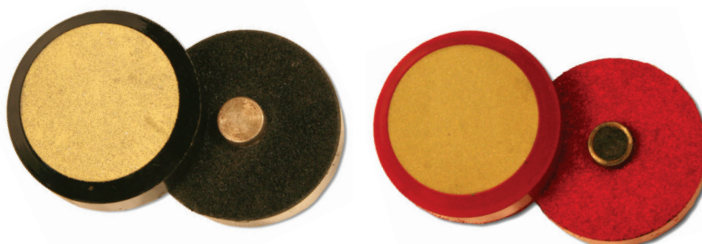
GRINDING AND POLISHING SYSTEMS

Transitional Diamonds – “The Original”

PA-10997 #1 Grit 2” Transitional Diamond

PA-10998 #4 Grit 2” Transitional Diamond

Excellent for use on Terrazzo and Stone. Also works very well to remove metal bond scratches on concrete on both planetary and rotary machines.



Ceramic Heat Reduced Diamonds for Soft/Medium Concrete and Overlays

For use on 555, 580, 735 and 780 machines

PA-103050 #0 Grit 3” Transitional Diamond

PA-103100 #1 Grit 3” Transitional Diamond

PA-103400 #4 Grit 3” Transitional Diamond

DIA7204 #30/40 Grit 3” Green Soft Cut (hard concrete)

PA-103050H #50 Grit 3” Hard Bond Ceramic Diamond

PA-103100H #100 Grit 3” Hard Bond Ceramic Diamond

- Long-life.
- Used to remove scratches.
- Great transition from metal bonds to resins.
- Made from hybrid ceramic resin.
- Reduced heat transfer.
- High production rates.
- Helps save steps during the polishing process.

Run these diamonds after 60/80 grit metal bonds to produce excellent finish before 200 or 400 resin steps.



REFINE, REFINE II POLISHING RESINS

GRINDING AND POLISHING SYSTEMS

3MM

Refine Resin – thin for light machines – 400lbs or less

DIAITS800100	100 Grit 3" Resin Black
---------------------	-------------------------

DIAITS800200	200 Grit 3" Resin Blue
---------------------	------------------------

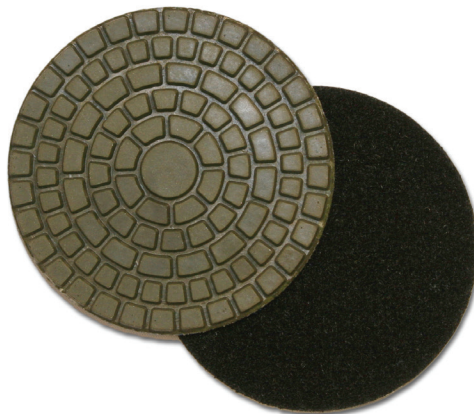
DIAITS800400	400 Grit 3" Resin Red
---------------------	-----------------------

DIAITS800800	800 Grit 3" Resin White
---------------------	-------------------------

DIAITS8001500	1500 Grit 3" Resin Yellow
----------------------	---------------------------

DIAITS8003000	3000 Grit 3" Resin Green
----------------------	--------------------------

- Quality 3MM resin for use under light polishing machines.



6MM

Refine II Resin – medium to heavy machines

DIAITS800100-2	100 Grit 3" Resin Black
-----------------------	-------------------------

DIAITS800200-2	200 Grit 3" Resin Blue
-----------------------	------------------------

DIAITS800400-2	400 Grit 3" Resin Red
-----------------------	-----------------------

DIAITS800800-2	800 Grit 3" Resin White
-----------------------	-------------------------

DIAITS8001500-2	1500 Grit 3" Resin Yellow
------------------------	---------------------------

DIAITS8003000-2	3000 Grit 3" Resin Green
------------------------	--------------------------

- Popular, high-quality 6MM resin for use with any size grinding machines.



FLEXRES & SUPERFLEX POLISHING RESINS

GRINDING AND POLISHING SYSTEMS

Flex Resin – Premium Long Life

Hybrid – rubber backed - 12mm Thick
For larger platforms – 800lbs and above

DIA3HYBRID50	50 Grit 3" Flexres Hybrid
DIA3HYBRID100	100 Grit 3" Flexres Hybrid
DIA3HYBRID200	200 Grit 3" Flexres Hybrid
DIA3HYBRID400	400 Grit 3" Flexres Hybrid
DIA3HYBRID800	800 Grit 3" Flexres Hybrid
DIA3HYBRID1500	1500 Grit 3" Flexres Hybrid
DIA3HYBRID3000	3000 Grit 3" Flexres Hybrid

- High quality, long-life resin used under larger platforms. Thick rubber backed 3" tool made with a softer resin compound, which allows the diamonds to hit uneven floors and wear evenly.



Super Flex Resin – Premium Long Life

Hybrid – rubber backed - 15mm Thick
For larger platforms – 800lbs and above

DIA3SUPERFLEX50	50 Grit 3" Superflex Hybrid
DIA3SUPERFLEX100	100 Grit 3" Superflex Hybrid
DIA3SUPERFLEX200	200 Grit 3" Superflex Hybrid
DIA3SUPERFLEX400	400 Grit 3" Superflex Hybrid
DIA3SUPERFLEX800	800 Grit 3" Superflex Hybrid
DIA3SUPERFLEX1500	1500 Grit 3" Superflex Hybrid
DIA3SUPERFLEX3000	3000 Grit 3" Superflex Hybrid

- High quality, long-life resin used under larger platforms. Thick rubber backed 3" tool made with a harder resin compound for increased productivity under heavy platform machines..



EASY EDGE TRANSITIONAL CUP WHEEL

GRINDING AND POLISHING SYSTEMS

4" Easy Edge

DIA-695363B	4" Easy Edge Coarse 30 Grit
DIA-695364B	4" Easy Edge Coarse 50 Grit
DIA-695365B	4" Easy Edge Medium 100 Grit
DIA-695366B	4" Easy Edge Fine 270 Grit
DIA-695367B	4" Easy Edge Fine 400 Grit

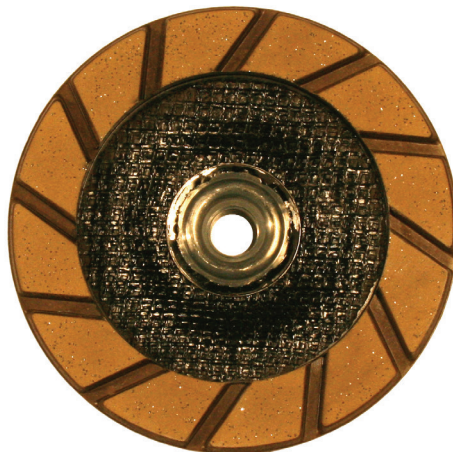
- Aggressive grind with superb finish.
- Blends well with the floor.
- Eliminates gouging.
- One tool for hard and soft concrete.



5" Easy Edge

DIA-695368B	5" Easy Edge Coarse 30 Grit
DIA-695369B	5" Easy Edge Coarse 50 Grit
DIA-695370B	5" Easy Edge Medium 100 Grit
DIA-695371B	5" Easy Edge Fine 270 Grit
DIA-695372B	5" Easy Edge Fine 400 Grit

- Aggressive grind with superb finish.
- Blends well with the floor.
- Eliminates gouging.
- One tool for hard and soft concrete.



7" Easy Edge

DIA-695352B	7" Easy Edge Coarse 30 Grit
DIA-695361B	7" Easy Edge Coarse 50 Grit
DIA-695353B	7" Easy Edge Medium 100 Grit
DIA-695354B	7" Easy Edge Fine 270 Grit
DIA-695362B	7" Easy Edge Fine 400 Grit

- Aggressive grind with superb finish.
- Blends well with the floor.
- Eliminates gouging.
- One tool for hard and soft concrete.



HAND TOOL RESIN PADS

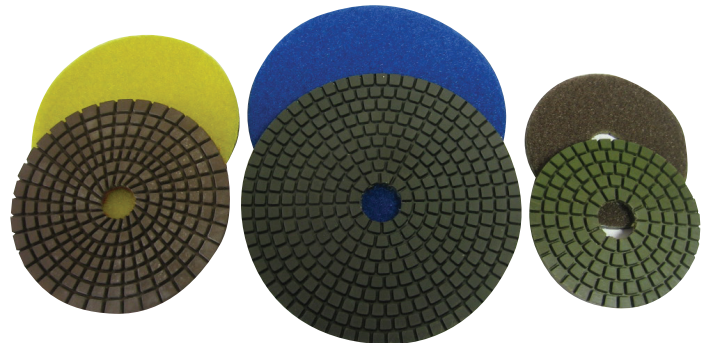
GRINDING AND POLISHING SYSTEMS

Hand Tool Resin Pads

For use with 3", 4", 5" polishing tools and grinders,
on stone or concrete, wet or dry

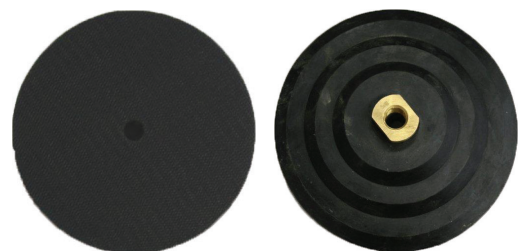
PP-D3200	3" Economy Hand Tool Resin Pad 200 Grit
PP-D3300	3" Economy Hand Tool Resin Pad 300 Grit
PP-D3500	3" Economy Hand Tool Resin Pad 500 Grit
PP-D31000	3" Economy Hand Tool Resin Pad 1000 Grit
PP-D32000	3" Economy Hand Tool Resin Pad 2000 Grit
PP-D33000	3" Economy Hand Tool Resin Pad 3000 Grit
PP-D4050	4" Economy Hand Tool Resin Pad 50 Grit
PP-D4080	4" Economy Hand Tool Resin Pad 80 Grit
PP-D4150	4" Economy Hand Tool Resin Pad 150 Grit
PP-D4300	4" Economy Hand Tool Resin Pad 300 Grit
PP-D4500	4" Economy Hand Tool Resin Pad 500 Grit
PP-D41000	4" Economy Hand Tool Resin Pad 1000 Grit
PP-D42000	4" Economy Hand Tool Resin Pad 2000 Grit
PP-D43000	4" Economy Hand Tool Resin Pad 3000 Grit
PP-D5050	5" Economy Hand Tool Resin Pad 50 Grit
PP-D5080	5" Economy Hand Tool Resin Pad 80 Grit
PP-D5100	5" Economy Hand Tool Resin Pad 100 Grit
PP-D5150	5" Economy Hand Tool Resin Pad 150 Grit
PP-D5200	5" Economy Hand Tool Resin Pad 200 Grit
PP-D5300	5" Economy Hand Tool Resin Pad 300 Grit
PP-D5400	5" Economy Hand Tool Resin Pad 400 Grit
PP-D5500	5" Economy Hand Tool Resin Pad 500 Grit
PP-D5800	5" Economy Hand Tool Resin Pad 800 Grit

PP-D1000	5" Economy Hand Tool Resin Pad 1000 Grit
PP-D51500	5" Economy Hand Tool Resin Pad 1500 Grit
PP-D52000	5" Economy Hand Tool Resin Pad 2000 Grit
PP-D53000	5" Economy Hand Tool Resin Pad 3000 Grit
DIASC9P7050	7" Economy Hand Tool Resin Pad 50 Grit
DIASC9P7010	7" Economy Hand Tool Resin Pad 100 Grit
DIASC9P7020	7" Economy Hand Tool Resin Pad 200 Grit
DIASC9P7040	7" Economy Hand Tool Resin Pad 400 Grit
DIASC9P7080	7" Economy Hand Tool Resin Pad 800 Grit
DIASC9P7150	7" Economy Hand Tool Resin Pad 1500 Grit
DIASC9P7300	7" Economy Hand Tool Resin Pad 3000 Grit



Backing Pads

PP-D3 3"	Backing Pad
PP-D4 4"	Backing Pad
PP-D5 5"	Backing Pad
PP-D7 7"	Backing Pad



10" BLADES

GRINDING AND POLISHING SYSTEMS



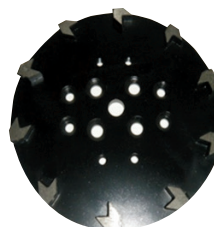
CG1020ASEGH



CG1010ASEG



CG1020ASEG



CG101ASEGH

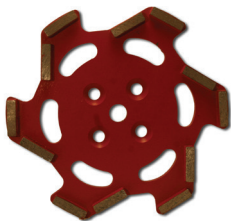


CG1020DBT

10" Blades

CG1010ASEG	10" 10 Segment Premium Arrow Plate
CG1020ASEG	10" 20 Segment Premium Arrow Plate
CG1010ASEGH	10" 10 Segment Arrow Plate Hard Bond
CG1020ASEGH	10" 20 Segment Arrow Plate Hard Bond
CG1010DBT	10" 10 Segment Plate Medium Bond
CG1020DBT	10" 20 Segment Plate Medium Bond

- Aggressive, productive blades.
- For removing coatings and material from concrete.



BG707113



BG707112



BG707111

10" Ninja Diamonds

BG707113	10" Ninja Disc Soft Red
BG707112	10" Ninja Disc Medium Green
BG707111	10" Ninja Disc Hard Blue

- Fast cutting, premium balanced blade.

CUPSTONES

GRINDING AND POLISHING SYSTEMS

5" Diamond Cup Wheels

CG-5TSEG 5" 10 T-Segment Diamond Cup Wheel

CG-59ETB 5" 9 Segment Diamond Cup Wheel

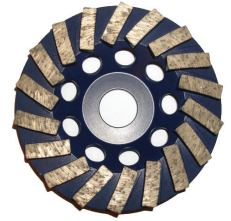
CG-18ETB 5" 18 Segment Diamond Cup Wheel



CG5TSEG



CG59ETB



CG18ETB

7" Diamond Cup Wheels

CG7ASEG 7" Arrow Segment Diamond Cup Wheel

CG7TSEG 7" -14 T-Segment Diamond Cup Wheel

CG712ETB 7" -12 Segment Diamond Cup Wheel

CG724ETB 7" -24 Segment Diamond Cup Wheel

CG712ETB5 / 8-11 7" -12 Segment Diamond Cup Wheel 5/8"-11

CG724ETB5 / 8-11 7" -24 Segment Diamond Cup Wheel 5/8"-11



CG7ASEG



CG7TSEG



CG712ETB



CG724ETB



CG712ETB5 / 8-11



CG724ETB5 / 8-11

Diamond cup wheels are used for:

- Concrete cleaning, thin coating removal, edging and concrete removal.
- Cup wheels with fewer segments offer faster, more aggressive grinding.
- Cup wheels with more segments provide smoother finishing and longer life.

Cougr Litex Wheels

05-10700C 7" Diameter Cougr Litex Wheel #16 Grit

05-10705C 7" Diameter Cougr Litex Wheel #8 Grit

05-10710C 7" Diameter Cougr Litex Wheel #24 Grit

05-10720C 7" Diameter Cougr Litex Wheel #36 Grit

- Litex style disc used to remove thick coatings, mastic, epoxy or paint.
- Inexpensive, lightweight and aggressive disc allows for higher production at lower cost.
- Reinforced plastic backing eliminates the need for backer pads.



CUPSTONES & PCD WHEELS

GRINDING AND POLISHING SYSTEMS

5" Diamond Cup Wheels – Special

CGF5BTD 5" Supreme 18/20 Grit Diamond Cup Wheel

CGF5BTD5060 5" Supreme 50/60 Grit Diamond Cup Wheel

CGF5BTD120140 5" Supreme 120/140 Grit Diamond Cup Wheel

- Double row supreme cup wheels provide smoother finishing and longer life.



5" Supreme Cup Wheel

7" Diamond Cup Wheels – Special

CGF7BTD 7" Supreme 18/20 Grit Diamond Cup Wheel

CGF7BTD5060 7" Supreme 50/60 Grit Diamond Cup Wheel

CGF7BTD120140 7" Supreme 120/140 Grit Diamond Cup Wheel

- Double row supreme cup wheels provide smoother finishing and longer life.



7" Supreme Cup Wheel

PCD Wheels

CG5PCD4 5" PCD 4 Segment Diamond Cup Wheel

CG7PCD6 7" PCD 6 Segment Diamond Cup Wheel

- Extremely aggressive PCD diamond cup wheels.
- Excellent for cutting glues and mastics from floors.

Diamond cup wheels are used for:

- Concrete cleaning, thin coating removal, edging and concrete removal.
- Cup wheels with fewer segments offer faster, more aggressive grinding.
- Cup wheels with more segments provide smoother finishing and longer life.



CG5PCD4



CG7PCD6

MILLING HEAD & BUSH HAMMER

GRINDING AND POLISHING SYSTEMS

For heavy grinding concrete with 780 machines

E10240	Cutter Plate with 5 Bush Hammers – Complete
BG300117-1	Cutter Plate with 5 Star Wheel Cutters – Complete
E09119 / Set	Replacement Bush Hammer / specify set of 9 or 15
BG300109	Replacement Star Wheel Cutters / specify 9 or 15

- For use on thick coating removal, rubberized coatings, parking deck materials and overlay removal.
- Very aggressive, high production, easy to use.



BG300117-1



E10240



Bush Hammer Installation Required Parts

Bush Hammer Assembly Parts

For 735 and 780 machines

BG11880	Fork - requires 3
BG11879	Buffer Disc - requires 3
BG11878	Grommets - requires 12
BE0608	Retaining Ring - requires 3
BE0204/ BE0584	Bolt & Spring Washer - 9 ea.
BE0030	Bolt - requires 3
BE0314	Washer - requires 6

FLOR GRIT PADS

GRINDING AND POLISHING SYSTEMS

PA-109200	27" Flor Grit Pad 200 Grit
PA-109400	27" Flor Grit Pad 400 Grit
PA-10993	27" Flor Grit Pad 800 Grit
PA-10994	27" Flor Grit Pad 1500 Grit
PA-10995	27" Flor Grit Pad 3000 Grit
PA-10987	21" Flor Grit Pad 800 Grit
PA-10988	21" Flor Grit Pad 1500 Grit
PA-10989	21" Flor Grit Pad 3000 Grit

- Quality high-speed diamond impregnated burnishing pad.
- For use on concrete and stone during the polishing process.
- High diamond content.
- Extremely hard diamonds baked into hogs hair pads.
- 15-20K Production rates.
- Made in the USA.



SHROUD KITS

GRINDING AND POLISHING SYSTEMS

Shroud Kits

DIA-05-65710 7" Premium Full Shroud

DIA-05-65713 7" Premium Hinged Shroud

- Shroud kits are an easy way to upgrade your existing tools and control dust.
- Diamatic® shroud kits are available to fit more grinder models than ever before.
- Our shroud kits offer a precision fit and high-quality components for superior performance and dust control.



SCRAPER BLADES & ACCESSORIES

GRINDING AND POLISHING SYSTEMS

Carpet Slitting & Removal Blades

P000553	8" Carpet Cutting & Removal Blade
----------------	-----------------------------------

P000554	10" Carpet Cutting & Removal Blade
----------------	------------------------------------

P000555	12" Carpet Cutting & Removal Blade
----------------	------------------------------------



Tile Blades with Bevel

P000859	6" Tile Blade with Bevel
----------------	--------------------------

P000854	8" Tile Blade with Bevel
----------------	--------------------------

P000886	10" Tile Blade with Bevel
----------------	---------------------------

P000855	12" Tile Blade with Bevel
----------------	---------------------------



Premium Chisels for BMS-220 ADB

E09540	2" Premium Chisel Blade
---------------	-------------------------

E09542	6" Premium Chisel Blade
---------------	-------------------------

E09550	2" Heavy Duty Chisel Blade
---------------	----------------------------

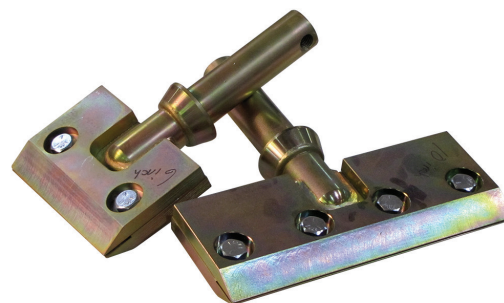
E09542	6" Heavy Duty Chisel Blade
---------------	----------------------------

E09664	Tool Holder for Chisel Blades (required)
---------------	--



Scraper Blades are used for

- Concrete cleaning, thin coating removal, and glue removal.
- Removal of VCT or ceramic tiles.
- Removal of carpet or wood flooring.
- Removal of mastic and heavy adhesives.



Tool Holder



DIAMATIC USA

5220 Gaines Street
San Diego, CA 92110
Toll free: 888.295.5512
Tel: 619.295.0893
Fax: 619.295.0754
Email: info@diamaticusa.com
www.diamaticusa.com
www.ultraflor.com

NORTHEAST FACILITY

622 Grant Road
Folcroft, PA 19032
Toll free: 888.295.5512
Tel: 619.295.0893
Fax: 888.283.3312
Email: info@diamaticusa.com
www.diamaticusa.com