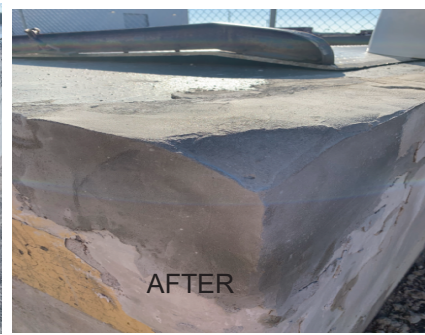


Stone | EDGE

SURFACES

Professional Grade Concrete Overlays

CPR concrete patch & repair applications



CPR

STONE EDGE SURFACES
CONCRETE PATCH & REPAIR

Concrete Patch & Repair

DESCRIPTION

Stone Edge Surfaces CPR-Concrete Patch and Repair is a high-performance, multi-use, 15 to 30 minute set time, 10,000 psi, no-shrink, no crack, concrete patch and repair material used for general and structural concrete repair from 1/4" to 4" thick. CPR is a polymerized Hydraulic & Portland cement concrete product that can be troweled vertically, horizontally or overhead, has superior bonding strength, and does not require water curing or a primer.



CPR-Concrete Patch and Repair can be used in industrial, commercial and residential grouting, concrete repairing and patching, doweling and anchoring. CPR can be used as a stand alone patch and repair product or as an underlayment for most overlays. CPR can be used as a scratch coat, it can be colored, be ground and even polished. Note: When applying horizontally on a walking or driving surface, do not feather the edges less than 1/4". CPR comes in light concrete Gray in: 50 LB Bags (FXCPR50) and 20 LB Pails (FXCPR20).



MOST COMMON USES

- Concrete Patch and Repair (Vertical, Horizontal, Overhead)
- Industrial, Commercial, and Residential
- Grouting, Doweling and Anchoring
- As an Underlayment for Overlays

APPLICATION

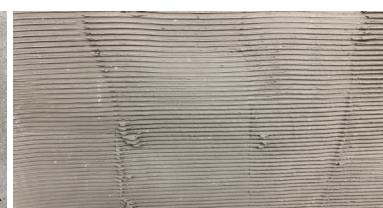
THICKNESS: Feather thin to 4"+ deep

APPLICATION METHOD: Most common method is Trowel

WORKING TIME: 1-15 minutes in warm temperatures, +/- depending on temp, humidity. 15 to 30 minute average set.

PRODUCTS USED WITH: concrete overlays, epoxies, sealers

COMMONLY APPLIED OVER: Concrete



For additional installation examples, images and training Videos, visit us online, call or email:

www.stoneedgesurfaces.com | 844-786-6333

info@stoneedgesurfaces.com

Stone Edge Surfaces Division - Turley International Resources, LLC 4322 South 80th Street, Mesa, AZ 85212