

# EDGE-PRO 80

SEMI-RIGID POLYUREA JOINT FILLER

600 ML (300x300) Dual-Cartridge Kit

## IMPORTANT INSTRUCTIONS PLEASE READ BEFORE USE

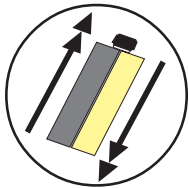
CARTRIDGE SHOULD BE STORED AT OR CONDITIONED TO 65°F - 75°F PRIOR TO USE FOR BEST RESULTS

For most consistent mix, dispense with *Albion B26 T600* or similar 26:1 thrust ratio dispensing gun. Lower thrust ratios can lead to less consistent results.

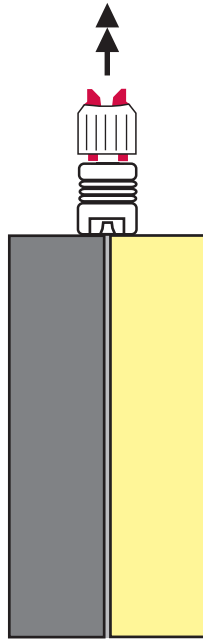
## INSTRUCTIONS FOR USING CARTRIDGE UNIT

1

SHAKE WELL  
BEFORE USE  
(45 seconds+)



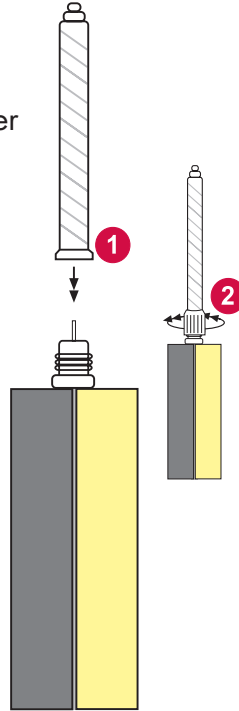
Unscrew lock nut and pull plug out



2

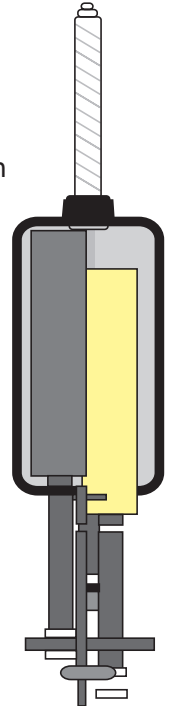
Place static mixer  
onto neck of  
cartridge.

Screw lock nut  
over mixer and  
secure tightly



3

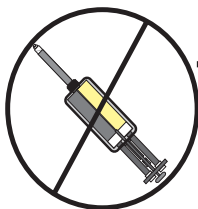
Pull back  
pistons in gun  
and securely  
load  
cartridge  
in cradle



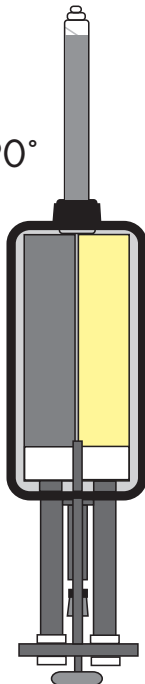
4

### IMPORTANT!

Hold Gun  
straight up at  
a 90° angle  
and slowly  
pull trigger to  
purge air from  
unit. Drive  
material to  
top of mixer.



90°

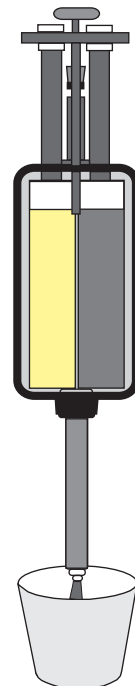


5

Tilt gun down and squeeze  
first 3-4 shots of material  
into a disposable cup, etc.  
until color appears to be  
consistent.

### IMPORTANT!

Gun should remain tilted  
down whenever dispensing  
or when cartridge is being  
used - do not tilt gun up  
during use as partially  
mixed material may run  
back into cartridge!



UPDATED 04/20