



ARMOR-HARD JOINT REBUILD SEQUENCE

EXISTING CONDITION



SAW CUT LINES BEHIND SPALL



REMOVE REMAINING CONCRETE



PRIME CLEANED JOINT WITH AH LIQUID



FOR MORE INFORMATION ON THIS AND OTHER REPAIR DETAILS CONTACT US AT:
800.223.MM80 • WWW.METZGERMCGUIRE.COM • E-MAIL: INFO@METZGERMCGUIRE.COM
P.O. BOX 2217 CONCORD, NH 03302 · FAX: 603.224.6020



METZGER/McGUIRE

FILL JOINT WITH ARMOR-HARD MORTAR



TROWEL FLUSH WITH FLOOR



AFTER CURE, GRIND FLUSH WITH SURFACE



SNAP LINE OVER ORIGINAL JOINT



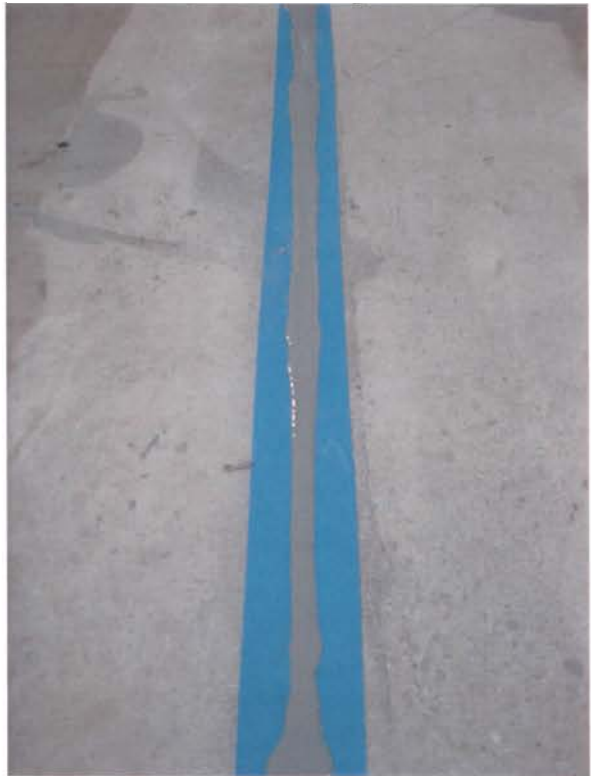
FOR MORE INFORMATION ON THIS AND OTHER REPAIR DETAILS CONTACT US AT:
800.223.MM80 • WWW.METZGERMCGUIRE.COM • E-MAIL: INFO@METZGERMCGUIRE.COM
P.O. BOX 2217 CONCORD, NH 03302 · FAX: 603.224.6020



METZGER/McGUIRE

SAW CUT NEW JOINT

FILL NEW JOINT WITH SPAL-PRO 2000



**RAZOR OFF CURED
SPAL-PRO 2000 OVERFILL**

FINISHED CONDITION



FOR MORE INFORMATION ON THIS AND OTHER REPAIR DETAILS CONTACT US AT:
800.223.MM80 • WWW.METZGERMCGUIRE.COM • E-MAIL: INFO@METZGERMCGUIRE.COM
P.O. BOX 2217 CONCORD, NH 03302 · FAX: 603.224.6020